



THE UNIVERSITY OF NEW MEXICO • HEALTH SCIENCES CENTER  
**UNM HOSPITALS**

---

# **Bernalillo County Commissioner Report**

**June 30, 2016**



THE UNIVERSITY OF NEW MEXICO • HEALTH SCIENCES CENTER

**UNM HOSPITALS**

## Index

	<b>Page</b>
Bernalillo County patient encounters by funding source	<b>3</b>
Financial assistance to patients by county	<b>4</b>
UNM Care and UNMCI enrollment and numbers assigned to First Choice	<b>5</b>
Emergency room data on patients leaving without being seen and average hours from arrival to disposition	<b>6</b>
Number of FTE's and retention rate for RN, pharmacy, pulmonary, physical therapist and radiology technicians	<b>7</b>
Quarterly statement of net assets	<b>8</b>
Quarterly statement of revenues, expenses and changes in net assets	<b>9</b>
A Number of indigent Bernalillo County resident <i>outpatients</i> broken out by zip code and the cost of care for such patients	<b>10</b>
B Number of indigent Bernalillo County resident <i>inpatients</i> broken out by zip code and the cost of care for such patients	<b>10</b>
C Primary Services provided to Bernalillo County residents by primary service type	<b>11</b>
D Primary reasons for Bernalillo County indigent resident visits	<b>12</b>
E Emergency room wait times for Bernalillo County residents	<b>10</b>
G Number of County residents applying for and approved for financial assistance	<b>13</b>
UH and Behavioral Statistics	<b>14</b>
2015 Revenue by Payor	<b>15</b>
2015 Mill Levy Expense	<b>16</b>
2015 Mill Levy Expense by Specialty	<b>17</b>
2015 Mill Levy Expense - Behavioral Only	<b>18</b>
Financial Assistance Enrollment Trends	<b>19</b>

**Encounters - Bernalillo County  
 For the twelve months ended June 30, 2016**

Source	Bernalillo County Encounters
Charity Care - Bernalillo County	8,444
EMSA	929
IHS	2,340
Medicaid	347,074
Medicare	213,622
Uninsured	38,742
HMO's & Insurance	195,320
All Other	44,666
<b>Total Encounters</b>	<b>851,137</b>

**Native American Encounters** **70,420**

Encounters - Bernalillo County consist of Inpatients and Outpatients who provided a Bernalillo County zip code during their registration. Categories are based on Primary Payer Code. Native American Encounters are based on race as provided during registration, are not restricted to only Bernalillo County zip codes and could be duplicate of the Bernalillo encounters by payer above.

**Financial Assistance to Patients by County\***  
**For the twelve months ended June 30, 2016**

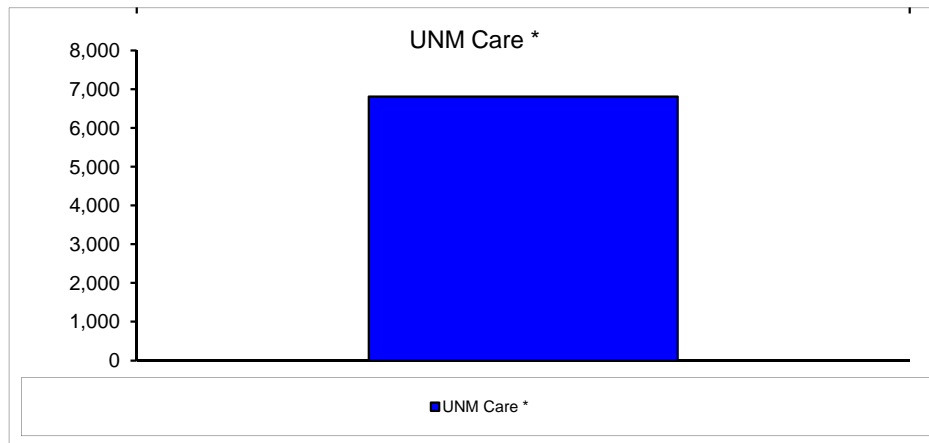
<b>County</b>	<b>Charity Care Cost</b>	<b>Uninsured Cost</b>	<b>Total Uncompensated Care Cost</b>
Bernalillo	43,464,124	\$ 21,922,883	\$ 65,387,007
Catron	21,481	-	21,481
Chaves	4,670	105,576	110,246
Cibola	26,860	405,065	431,925
Colfax	2,770	-	2,770
Curry	2,757	127,756	130,512
De Baca	185	-	185
Dona Ana	4,522	38,616	43,138
Eddy	27,038	145,785	172,824
Grant	12	48,428	48,440
Guadalupe	613	181,836	182,448
Harding	-	-	-
Hidalgo	-	-	-
Lea	74,634	113,507	188,141
Lincoln	1,219	22,409	23,629
Los Alamos	639	-	639
Luna	31,709	5,265	36,974
Mc Kinley	170	280,097	280,267
Mora	-	-	-
Otero	17,376	-	17,376
Quay	167	901	1,068
Rio Arriba	92,921	86,055	178,976
Roosevelt	-	61,941	61,941
San Juan	6,181	119,298	125,479
San Miguel	1,844	27,634	29,478
Sandoval	144,066	842,305	986,371
Santa Fe	19,792	369,574	389,366
Sierra	43,629	5,165	48,794
Socorro	6,408	63,113	69,520
Taos	361,321	342,498	703,819
Torrance	20,767	277,198	297,965
Union	297	2,234	2,531
Valencia	204,643	1,768,633	1,973,277
Out Of State	-	1,506,892	1,506,892
<b>Grand Total</b>	<b>\$ 44,582,815</b>	<b>\$ 28,870,662</b>	<b>\$ 73,453,478</b>

\* Based on primary and secondary coverage

Total Uncompensated Care Cost: Cost of care for UNM Hospitals is the actual cost of providing care - salary, benefits, supplies, drugs, blood, organs, utilities, depreciation, contracts, services.

**UNM Care  
 As of June 2016**

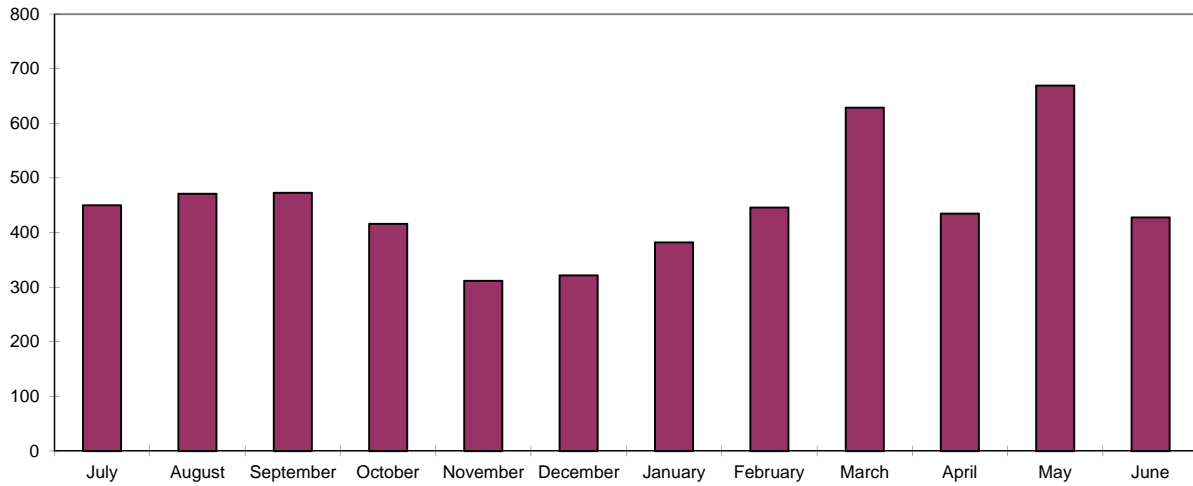
Category	Enrollment
UNM Care *	6,812



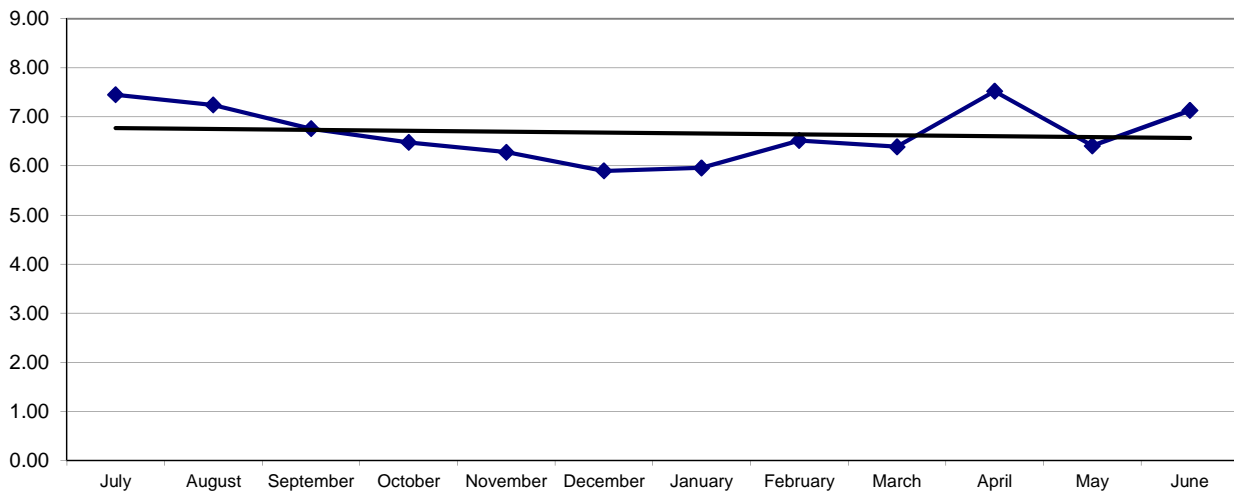
\* UNM Care includes 142 Native American Enrollees as of 6/30/2016.

**Emergency Services  
 For the Twelve months ending June 30, 2016**

**Patients left without being seen**



**Average Hours from Arrival to Disposition**





**Number of FTE's and Retention Report  
For the twelve months ended June 30, 2016**

<b>Category</b>	<b>Number of FTE's as of June 2015</b>	<b>Number of FTE's as of June 2016</b>	<b>Hires Headcount</b>	<b>Terms Headcount</b>	<b>Rolling Retention Rate</b>
<b>RN's</b>	1,867	2,010	320	255	87.10%
<b>Pharmacy</b>	167	188	34	27	85.55%
<b>Pulmonary</b>	71	77	1	3	96.12%
<b>Physical Therapists</b>	48	61	8	5	91.78%
<b>Radiology Techs</b>	140	135	13	14	89.75%

NOTE: The number of FTE's for selected categories is listed above; however, it should be noted that the retention rate is calculated using the hires and terms for each respective category.

## Statements of Net Assets

June 30, 2016 and June 30, 2015

<b>Assets</b>	<b>June 2016</b>	<b>June 2015</b>
<i>(In Thousands)</i>	<b>Unaudited</b>	<b>Unaudited</b>
<b>Current assets:</b>		
Cash and cash equivalents	\$ 143,268	146,491
Marketable securities	34,864	34,558
Receivables:		
Patient, net	130,988	134,264
University of New Mexico	1,472	780
Estimated third-party payor settlements	58,460	37,259
Bernalillo County treasurer	1,740	1,668
Other	31,320	21,378
Total current assets	<u>402,112</u>	<u>376,398</u>
<b>Noncurrent assets:</b>		
Assets whose use is limited:		
Held by trustee	16,127	15,072
By UNM Hospital Clinical Operations Board	21,040	21,453
Capital assets, net	232,499	239,294
Total assets	<u>671,778</u>	<u>652,217</u>
 <b>Liabilities</b>		
<b>Current liabilities:</b>		
Accounts payable	62,288	49,723
Payable to University of New Mexico	53,132	71,056
Estimated third-party payor settlements	52,607	34,795
Interest payable bonds	88	427
Other accrued liabilities	52,254	53,775
Total current liabilities	<u>220,369</u>	<u>209,776</u>
Bonds payable	108,965	115,000
Total liabilities	<u>329,334</u>	<u>324,776</u>
 <b>Net Assets</b>		
Restricted for expendable grants, bequests, and contributions	15,355	14,980
Restricted for trust indenture and debt agreement	16,128	14,347
Unrestricted Total net assets	187,428	173,820
Assets invested in capital	123,534	124,294
Total net assets	<u>\$ 342,445</u>	<u>\$ 327,441</u>



**UNM HOSPITALS**

Statements of Revenues, Expenses, and Changes in Net Assets

For the twelve months ended June 30, 2016

<i>(In Thousands)</i>	<b>June 2016</b>	<b>June 2015</b>
	<b>Unaudited</b>	
Operating revenues:		
Net patient service	\$ 872,468	911,755
Other	23,992	26,407
Total operating revenues	<u>896,460</u>	<u>938,162</u>
Operating expenses:		
Employee Compensation and Benefits	474,255	430,779
Medical services	184,038	164,259
Medical supplies	160,792	141,718
Occupancy/Equipment/Depreciation	96,847	90,316
Purchased services	53,137	54,717
Other	27,824	22,598
Total operating expenses	<u>996,894</u>	<u>904,387</u>
Operating loss	<u>(100,434)</u>	<u>33,775</u>
Nonoperating revenues (expenses):		
Bernalillo County Mill Levy	95,849	93,249
State appropriation	12,483	12,526
Investment income (dividends, gains and losses)	67	15,908
Interest Expense	(3,183)	(6,868)
Other Revenue and (Expense)	7,261	(131,168)
Land and Permanent Fund	850	820
Bequests and contributions	2,111	2,578
Net nonoperating revenues	<u>115,438</u>	<u>(12,955)</u>
Increase in net assets	15,004	20,820
Net assets, beginning of year	327,441	306,621
Net assets, end of year	\$ <u><u>342,445</u></u>	<u><u>327,441</u></u>

**Financial Assistance to Bernalillo County Patients by Zip Code**  
For the twelve months ended June 30, 2016

- A - Number of Indigent Bernalillo County resident outpatients by zip code and cost of care  
B - Number of Indigent Bernalillo County resident inpatients by zip code and cost of care  
F - Total cost of care for Bernalillo County indigent patients by zip code with cost methodology

Bernalillo County Zip	Inpatient Count	Inpatient Charity Care and Unisured Cost	Outpatient Count	Outpatient Charity Care and Unisured Cost	Total Patient Count	Total Patient Charity Care and Unisured Cost
87008	8	\$ 399	148	\$ 43,724	156	\$ 44,123
87022	13	32,419	260	71,557	273	103,976
87047	6	4,065	248	102,004	254	106,069
87059	31	141,397	803	345,063	834	486,460
87101	3	19,135	37	37,612	40	56,748
87102	172	1,135,497	5,695	2,841,843	5,867	3,977,340
87103	4	2,371	113	43,036	117	45,407
87104	76	378,001	2,481	1,064,995	2,557	1,442,996
87105	465	3,640,794	15,417	6,905,805	15,882	10,546,600
87106	141	561,248	4,046	1,857,265	4,187	2,418,512
87107	189	1,184,678	5,541	2,398,314	5,730	3,582,992
87108	413	2,390,653	11,126	5,162,796	11,539	7,553,449
87109	169	894,756	4,741	2,030,569	4,910	2,925,324
87110	166	794,563	5,517	2,019,387	5,683	2,813,950
87111	105	550,720	3,539	1,399,193	3,644	1,949,912
87112	159	557,673	5,757	2,355,106	5,916	2,912,780
87113	41	453,883	1,223	447,630	1,264	901,513
87114	123	418,947	4,009	1,657,817	4,132	2,076,765
87115	-	-	12	5,764	12	5,764
87116	-	-	70	39,952	70	39,952
87117	-	-	1	251	1	251
87119	2	4,476	59	8,163	61	12,639
87120	169	1,123,354	5,002	1,871,340	5,171	2,994,694
87121	526	3,441,111	15,675	8,563,694	16,201	12,004,805
87122	8	36,356	509	161,994	517	198,350
87123	218	1,428,660	7,506	3,434,800	7,724	4,863,460
87125	12	76,956	421	153,576	433	230,532
87131	2	2,093	28	134,919	30	137,012
87151	10	214,797	52	10,634	62	225,431
87153	-	-	37	10,175	37	10,175
87154	2	14,073	127	15,855	129	29,927
87158	-	-	-	-	-	-
87176	2	493	240	50,486	242	50,979
87181	2	5,669	93	17,867	95	23,536
87184	1	961	78	17,818	79	18,779
87185	-	-	22	12,835	22	12,835
87187	1	1,446	23	432	24	1,877
87190	2	118	77	29,717	79	29,835
87191	1	-	68	17,970	69	17,970
87192	2	28,711	127	49,372	129	78,083
87193	5	19,016	203	39,462	208	58,478
87194	4	28,894	96	60,379	100	89,272
87195	3	9,159	257	87,519	260	96,678
87196	4	7,523	122	19,570	126	27,093
87197	2	1,567	147	31,991	149	33,557
87198	2	7,253	257	39,163	259	46,417
87199	7	30,036	193	73,674	200	103,710
<b>Grand Total</b>	<b>3,271</b>	<b>\$ 19,643,921</b>	<b>102,203</b>	<b>\$ 45,743,086</b>	<b>105,474</b>	<b>\$ 65,387,007</b>

**C - Financial Assistance to Bernalillo County Patients by Service Type**  
For the twelve months ended June 30, 2016

Bernalillo County Zip	Cancer Count	Medicine Count	Pediatrics Count	Surgery Count	Emergency Medicine Count	Neurology Count	OBGYN Count	Orthopedics Count	Psychiatry Count	Other Count	Total Count
87008	19	80	-	5	5	11	5	7	22	2	156
87022	29	122	7	15	17	18	7	13	39	6	273
87047	8	143	-	5	17	16	14	12	29	10	254
87059	47	491	2	31	33	60	21	17	117	15	834
87101	1	22	-	-	4	-	3	3	7	-	40
87102	211	3,086	17	267	319	351	184	84	1,217	131	5,867
87103	2	53	1	3	1	11	8	-	36	2	117
87104	101	1,465	7	114	100	164	82	44	420	60	2,557
87105	493	7,232	57	670	609	891	537	240	2,651	336	13,716
87106	105	2,174	9	191	182	219	175	106	907	119	4,187
87107	187	3,124	19	296	232	367	211	89	1,101	104	5,730
87108	272	6,242	43	524	456	632	474	210	2,416	270	11,539
87109	159	2,760	22	212	230	343	167	98	805	114	4,910
87110	186	2,960	28	232	189	432	156	105	1,245	150	5,683
87111	199	1,815	13	159	156	295	143	81	687	96	3,644
87112	158	3,240	17	275	230	434	204	138	1,075	145	5,916
87113	63	635	7	66	57	88	83	32	193	40	1,264
87114	248	2,100	17	217	155	312	125	91	773	94	4,132
87115	-	-	-	-	-	2	-	-	9	1	12
87116	4	32	-	8	2	3	2	3	14	2	70
87117	-	1	-	-	-	-	-	-	-	-	1
87119	-	33	-	5	3	17	-	1	-	2	61
87120	253	2,782	23	250	204	375	148	94	922	120	5,171
87121	612	11,315	79	719	743	1,029	851	251	2,312	456	18,367
87122	31	240	1	28	14	26	15	9	135	18	517
87123	265	4,437	35	335	320	466	310	158	1,210	188	7,724
87125	19	220	-	13	29	38	9	8	89	8	433
87131	-	10	1	-	7	1	3	1	7	-	30
87151	1	20	-	4	5	-	6	2	21	3	62
87153	2	26	-	-	1	1	-	-	7	-	37
87154	4	65	1	11	4	16	4	3	19	2	129
87158	-	-	-	-	-	-	-	-	-	-	-
87176	4	141	-	14	13	23	1	10	32	4	242
87181	2	49	1	10	4	12	4	2	8	3	95
87184	9	42	-	2	1	3	11	1	3	7	79
87185	4	8	-	-	-	-	2	-	4	4	22
87187	2	16	-	2	1	-	1	-	1	1	24
87190	11	42	-	5	-	3	1	2	12	3	79
87191	6	29	1	7	1	5	3	5	11	1	69
87192	9	77	-	5	4	8	2	2	16	6	129
87193	5	111	1	5	8	15	7	16	32	8	208
87194	-	56	-	6	3	14	8	4	8	1	100
87195	15	154	-	18	14	26	5	4	19	5	260
87196	4	77	1	6	2	6	6	-	20	4	126
87197	5	93	-	17	7	8	-	4	13	2	149
87198	4	156	1	14	8	17	8	5	42	4	259
87199	16	112	-	3	3	7	8	4	41	6	200
<b>Grand Total</b>	<b>3,775</b>	<b>58,088</b>	<b>411</b>	<b>4,769</b>	<b>4,393</b>	<b>6,765</b>	<b>4,014</b>	<b>1,959</b>	<b>18,747</b>	<b>2,553</b>	<b>105,474</b>

Includes inpatient and outpatient

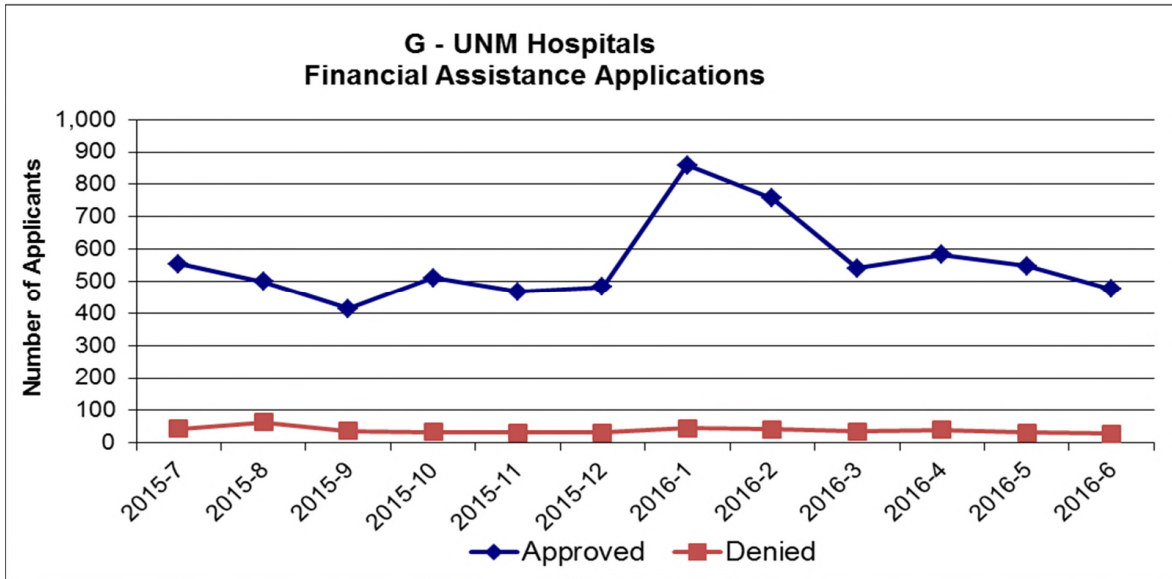
**D - Primary Reason for Bernalillo County Indigent Resident Visits  
For the 6 Quarters ending June 30, 2016**

Description	Examples of Illnesses						
	Q4 FY16	Q3 FY16	Q2 FY16	Q1 FY16	Q4 FY15	Q3 FY15	
Mental Disorders	5,307	4,092	2,167	4,635	7,838	4,544	Alcohol abuse, depression, post traumatic stress disorder
Factors Influencing Health Status and Contact with Health Service	3,247	4,336	2,587	3,971	4,344	4,160	Routine exam, follow up to surgery, child and infant wellness checks, etc
Diseases of Musculoskeletal and Connective Tissue	2,164	3,417	2,026	2,369	3,136	2,363	Joint pain, back pain, pain in limb, arthritis
Endocrine, Nutritional, and Metabolic Diseases and Immunity Disr	2,142	3,533	1,385	2,294	3,396	1,514	Abdominal pain, chest pain, cough, headache, rash, shortness of breath
Signs, Symptoms and Ill-Defined Conditions	1,186	5,340	1,107	1,541	2,457	2,517	Sleep Apnea, ear infection, carpal tunnel, diseases of the eye, migraine
Diseases of Nervous System and Sense Organs	1,093	1,113	859	1,486	2,506	1,548	Diabetes, high blood cholesterol, diseases of thyroid
Diseases of Circulatory System	1,167	2,209	717	1,340	1,748	1,769	Bone fractures, sprains, wounds, contusions (bruises)
Injury and Poisoning	1,152	2,392	728	1,326	1,775	1,455	Hypertension, heart failure, etc.
Diseases of Respiratory System	1,066	279	422	1,224	1,789	1,352	Cancer, benign growths
Diseases of Genitourinary System	1,108	998	640	1,195	1,652	1,323	Urinary tract infection, kidney stones, kidney disease
Neoplasms (abnormal new growth of tissue)	214	1,730	541	712	1,942	1,197	Sore throat, respiratory infection, sinusitis, asthma, pneumonia
Diseases of Digestive System	869	1,421	391	656	963	939	Esophageal reflux, hernia, diseases of colon, diseases of liver
Diseases Skin and Subcutaneous Tissue	337	1,528	77	645	903	589	
Complications of Pregnancy, Childbirth, and the Puerperium	451	871	388	525	917	657	Psoriasis, cellulitis and abscess
Infectious and Parasitic Diseases	214	333	412	159	359	278	Hepatitis, viral infections
Congenital Anomalies	28	352	88	133	179	127	Anemia, etc.
Diseases of Blood and Blood Forming Organs	84	348	100	76	190	49	
Newborn (Perinatal)	33	118	104	43	121	82	
Other (prescription pick-up, etc.)	1,400	3,033	1,679	4,021	4,938	2,582	
<b>Total Visits</b>	<b>23,262</b>	<b>37,443</b>	<b>16,418</b>	<b>28,351</b>	<b>33,315</b>	<b>29,045</b>	

Consists of indigent patients who provided a Bernalillo County zip code during their registration. Categories are based on CMS diagnosis codes.



For the twelve months ended June 30, 2016





**UNMH Statistics  
 FY15 and FY16 as of June 30**

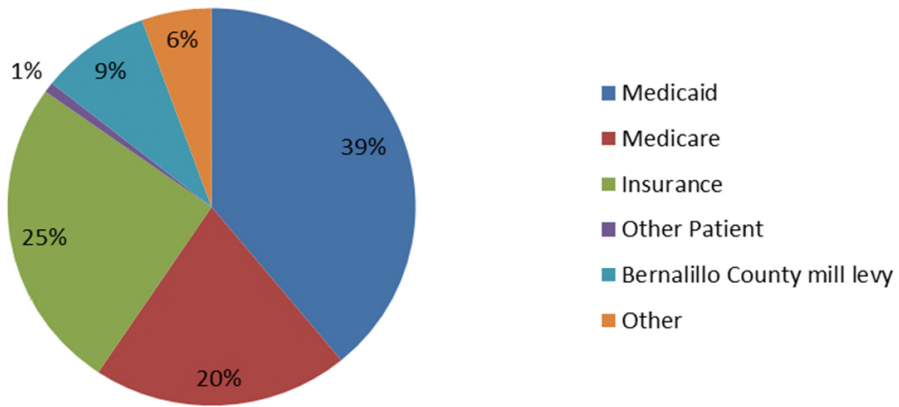
	<b>FY16 Actual</b>	<b>FY15 Actual</b>
<b>Patient Days</b>		
Adult	112,936	113,948
Pediatric	40,353	41,665
Newborn	5,321	4,899
<b>Total Patient Days</b>	<b>158,610</b>	<b>160,512</b>
<b>Total Equivalent Observation Days</b>	<b>13,411</b>	<b>9,679</b>
<b>Other Stats</b>		
<b>Clinic Visits</b>	520,038	488,423
<b>Emergency/Urgent Care</b>	102,188	103,724
<b>Operations</b>	19,947	19,460
<b>Births</b>	3,024	2,979

**Behavioral Statistics  
 FY15 and FY16 as of June 30**

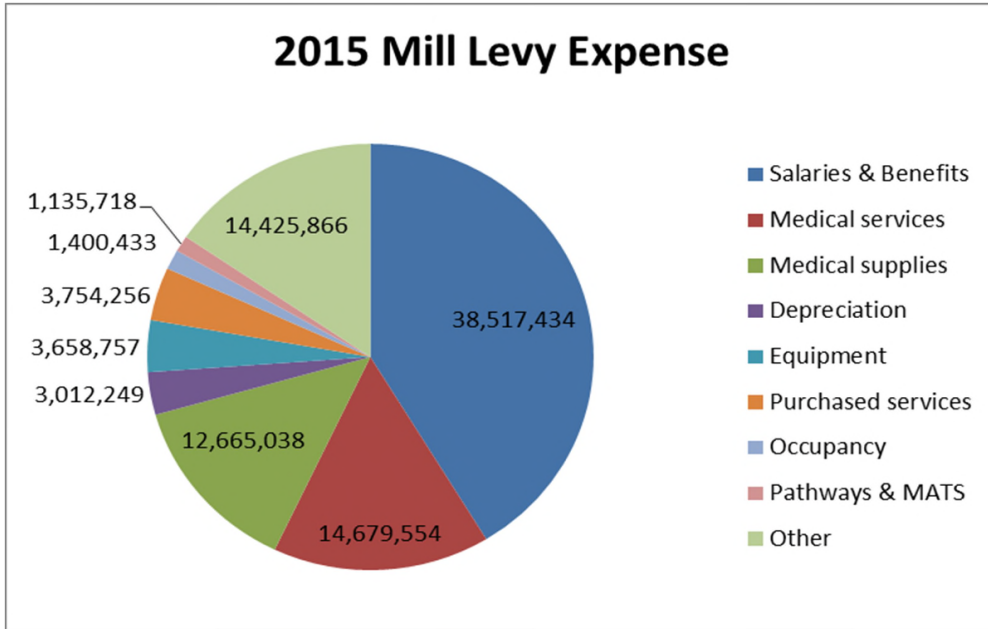
	<b>FY16 Actual</b>	<b>FY15 Actual</b>
<b>Patient Days</b>	23,242	24,126
<b>Other Stats</b>		
<b>Outpatient visits</b>	59,738	40,681
<b>Midlevel</b>	93,204	93,871
<b>Methadone &amp; Buprenorphine</b>	143,151	137,423



### 2015 Revenue



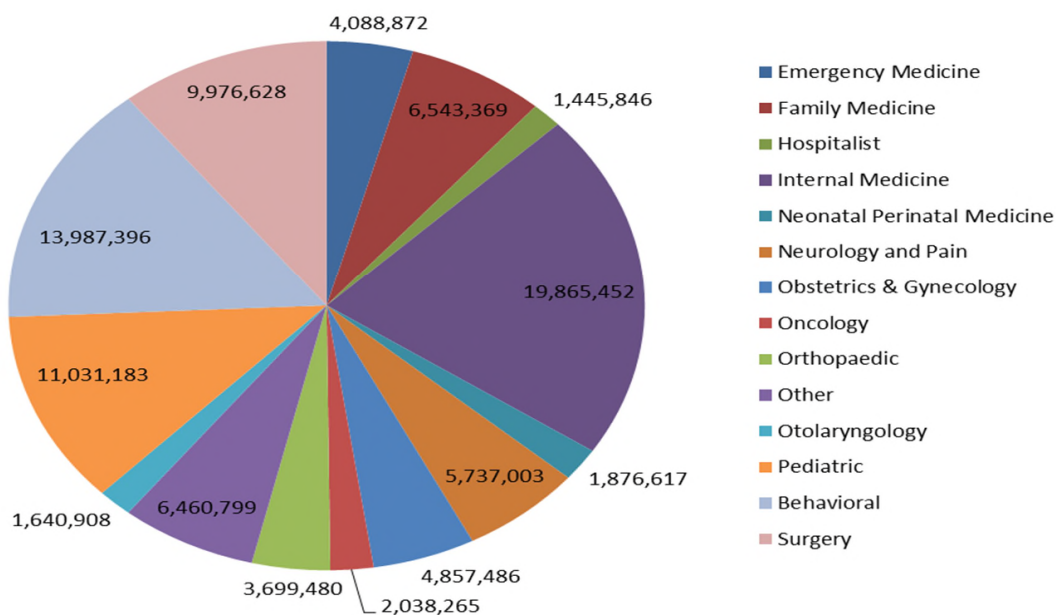
Medicaid	\$ 415,300,727
Medicare	216,408,888
Insurance	271,153,688
Other Patient	8,892,048
Bernalillo County mill levy	93,249,305
Other	59,026,402



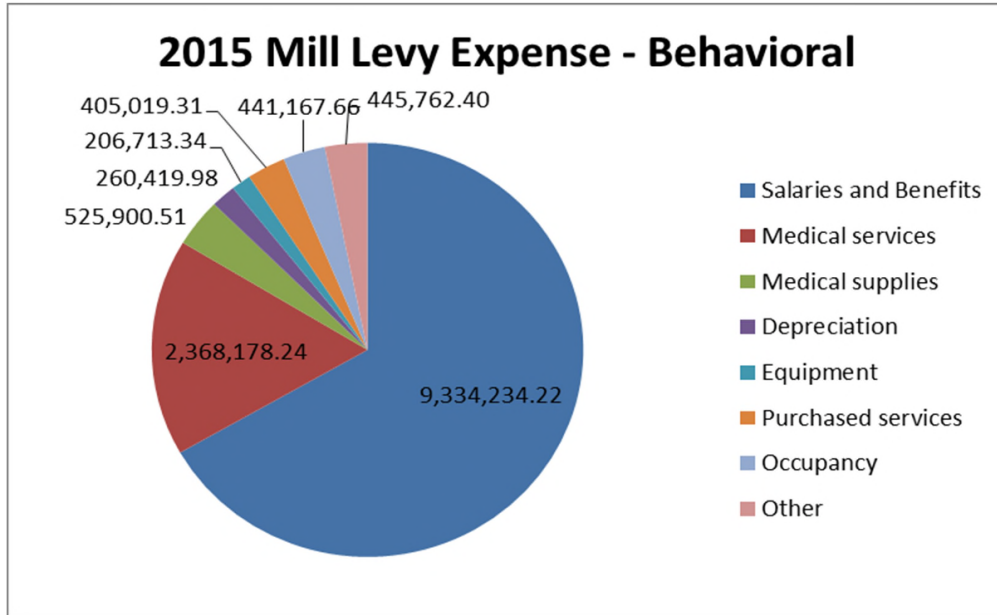
Salaries & Benefits	\$	38,517,434
Medical services		14,679,554
Medical supplies		12,665,038
Depreciation		3,012,249
Equipment		3,658,757
Purchased services		3,754,256
Occupancy		1,400,433
Pathways & MATS		1,135,718
Other		14,425,866
<b>Total Expense</b>	<b>\$</b>	<b>93,249,305</b>



### 2015 Mill Levy Expense by Specialty



Emergency Medicine	\$	4,088,872
Family Medicine		6,543,369
Hospitalist		1,445,846
Internal Medicine		19,865,452
Neonatal Perinatal Medicine		1,876,617
Neurology and Pain		5,737,003
Obstetrics & Gynecology		4,857,486
Oncology		2,038,265
Orthopaedic		3,699,480
Other		6,460,799
Otolaryngology		1,640,908
Pediatric		11,031,183
Behavioral		13,987,396
Surgery		9,976,628
<b>Total</b>	<b>\$</b>	<b>93,249,305</b>



Salaries and Benefits	\$	9,334,234
Medical services		2,368,178
Medical supplies		525,901
Depreciation		260,420
Equipment		206,713
Purchased services		405,019
Occupancy		441,168
Other		445,762
<b>Total Expense</b>	<b>\$</b>	<b>13,987,396</b>

